

Company Milestones

1937

Founded with a capital of ¥30 million

1938

Manufacturing of aircraft started



Tamaki Makita, Founder of Showa (1937)



Entrance of Factory (1939)

1958

Started the first honeycomb core production with craft paper



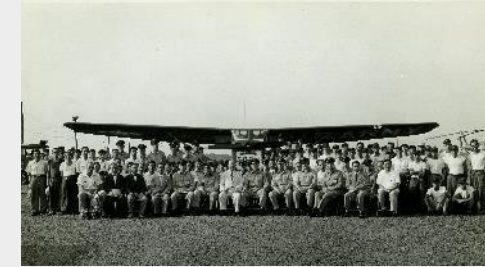
Showa Kawanishi N1K (1945)

1960

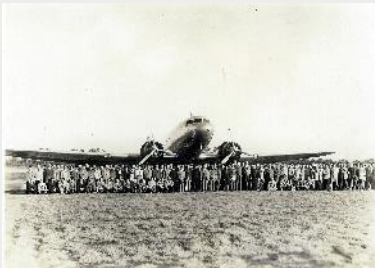
Technical licensing agreement signed with Hexcel Corp. (U.S.A.) to manufacture metal honeycomb core

1963

Started manufacturing the honeycomb panels for Satellite



500th Airplanes Showa Repaired (1955)



The First Showa DC3 (1939)



Started manufacturing Type 99 Bomber (1943)



Aircraft Repair (1952)



Started manufacturing Hovercraft (1963)

Company Milestones

1981
Aramid honeycomb manufacturing started
1982
Boeing qualification obtained for SAH (Showa Aramid Honeycomb) cores

1984
Started manufacturing aluminum honeycomb core for aircraft engine(V2500)

1990
Started B747-400F Galley supply to Boeing

1991
• Seattle liaison office opened in Seattle, U.S.A.
• Started manufacturing B747 Flap panels

1996
• Started manufacturing B737 Flap parts
• PAA aluminum honeycomb core was qualified by Boeing

1997
Showa Aircraft U.S.A. Inc. founded
1998
Aerospace Equipment Division acquired ISO 9001 certification

2001
• Akishima Factory acquired ISO14001 certification
• Started manufacturing flexible honeycomb core

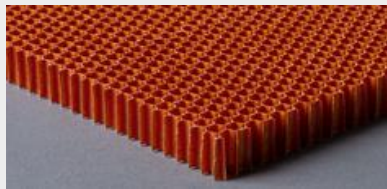
2005
FAA-STC for the Boeing 747-400BCF galley was awarded to Showa USA

2006
Started manufacturing B787 composite parts

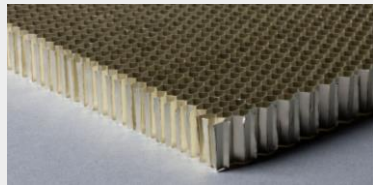
2008-9
Started the 777F and the 747-8F galley supply to Boeing

2014
• Started manufacturing double flexible honeycomb core
• Showa Aircraft Industry Philippines Inc. founded

2017
CFRP faced aramid honeycomb sandwich panels were qualified to BMS4-20



Aramid honeycomb manufacturing started(1981)



PAA aluminum honeycomb core(1996)



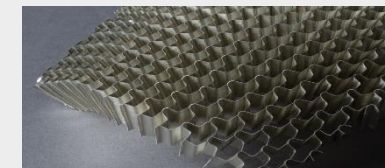
Parabolic antenna panels(1999)



Aircraft Galley(2008)



HAYABUSA2 panels(2012)



Double flexible honeycomb core manufacturing started (2014)



Showa Aircraft Industry Philippines Inc. (2014)



Celebrated the 6,000th Flap Panels(2017)



Introduced $\phi 14.5 \times 32.8$ ft Autoclave(1987)



Flight control surfaces manufacturing started (1991)